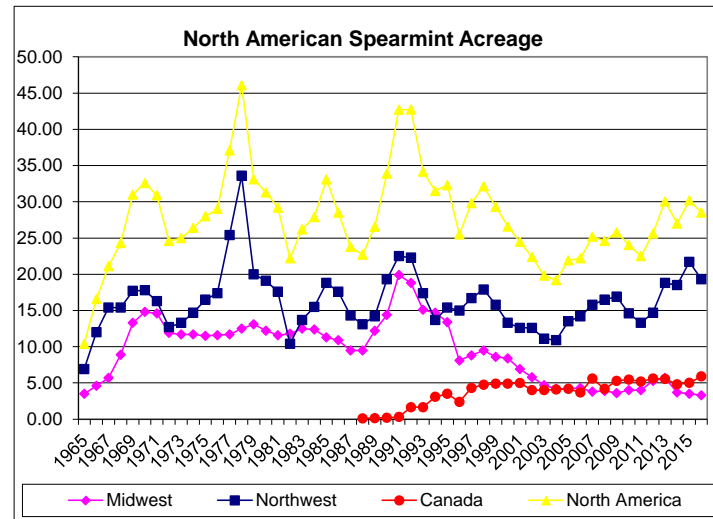
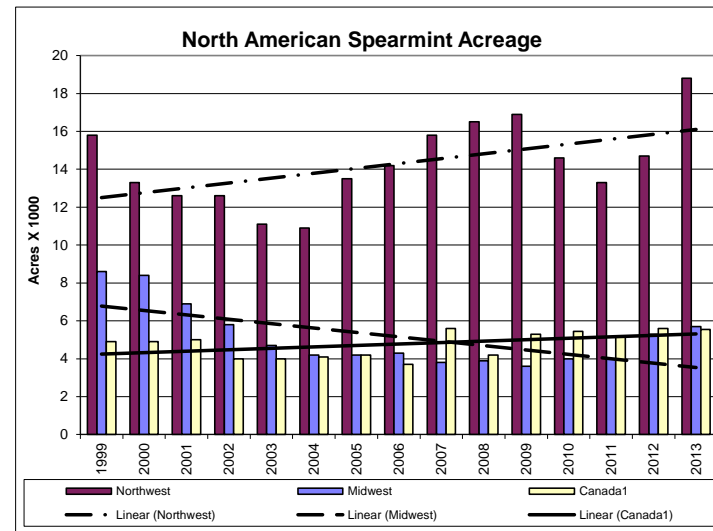


Table 1
Spearmint Oil: U.S., Acreage by State and Area
1965 to Date

Year	Indiana	Michigan	Wisconsin	Washington	Idaho	Oregon	Midwest	Northwest	U.S.	Canada ¹
1000 Acres										
1965	2.00	1.50		6.90			3.50	6.90	10.40	
1966	2.60	2.00		12.00			4.60	12.00	16.60	
1967	3.20	2.50		15.40			5.70	15.40	21.10	
1968	4.60	3.30	1.00	15.40			8.90	15.40	24.30	
1969	6.40	5.00		17.70			13.30	17.70	31.00	
1970	7.10	5.40	2.30	14.90	2.90		14.80	17.80	32.60	
1971	7.00	5.20	2.40	13.30	3.00		14.60	16.30	30.90	
1972	6.20	4.20	1.50	10.00	2.70		11.90	12.70	24.60	
1973	6.20	3.60	1.90	10.40	2.90		11.70	13.30	25.00	
1974	5.50	3.90	2.30	11.80	2.90		11.70	14.70	26.40	
1975	5.70	3.70	2.10	13.40	3.10		11.50	16.50	28.00	
1976	5.50	3.50	2.60	13.70	3.70		11.60	17.40	29.00	
1977	5.50	3.30	2.90	19.60	5.80		11.70	25.40	37.10	
1978	5.10	3.60	3.80	26.40	7.20		12.50	33.60	46.10	
1979	4.90	3.80	4.40	16.00	4.00		13.10	20.00	33.10	
1980	4.60	3.70	3.90	16.00	3.10		12.20	19.10	31.30	
1981	4.00	3.80	3.80	12.80	2.60	2.20	11.60	17.60	29.20	
1982	4.00	3.90	3.90	6.90	1.60	1.90	11.80	10.40	22.20	
1983	4.30	3.80	4.40	9.40	2.40	1.90	12.50	13.70	26.20	
1984	4.00	3.80	4.60	11.30	2.40	1.80	12.40	15.50	27.90	
1985	3.70	3.30	4.30	14.00	2.60	2.20	11.30	18.80	33.10	
1986	3.60	2.80	4.50	13.00	2.80	1.80	10.90	17.60	28.50	
1987	3.70	1.80	4.00	10.20	2.60	1.50	9.50	14.30	23.80	
1988	4.00	1.50	4.00	9.70	1.90	1.50	9.50	13.10	22.60	0.10
1989	4.40	1.90	5.90	10.60	2.10	1.50	12.20	14.20	26.40	0.15
1990	4.80	2.20	7.40	14.70	2.70	1.90	14.40	19.30	33.70	0.20
1991	7.50	3.00	9.40	17.30	3.20	2.00	19.90	22.50	42.40	0.30
1992	8.50	2.90	7.40	17.40	2.90	2.00	18.80	22.30	41.10	1.65
1993	6.00	2.80	6.30	13.30	2.20	1.90	15.10	17.40	32.50	1.65
1994	6.00	2.70	6.00	10.50	1.50	1.70	14.70	13.70	28.40	3.10
1995	5.00	2.20	6.20	11.80	1.60	2.00	13.40	15.40	28.80	3.50
1996	2.20	1.30	4.60	12.00	1.40	1.60	8.10	15.00	23.10	2.39
1997	2.50	1.50	4.80	13.10	1.70	1.90	8.80	16.70	25.50	4.30
1998	2.50	1.70	5.30	14.00	2.00	1.90	9.50	17.90	27.40	4.75
1999	2.00	1.70	4.90	12.50	1.80	1.50	8.60	15.80	24.40	4.90
2000	2.20	1.70	4.50	11.30	1.00	1.00	8.40	13.30	21.70	4.90
2001	2.00	1.70	3.20	10.60	0.90	1.10	6.90	12.60	19.50	5.00
2002	2.00	1.60	2.20	9.90	0.80	1.90	5.80	12.60	18.40	4.00
2003	1.80	1.60	1.30	9.20	0.70	1.20	4.70	11.10	15.80	4.00
2004	1.60	1.60	1.00	8.80	0.60	1.50	4.20	10.90	15.10	4.10
2005	1.60	1.60	1.00	10.50	0.60	2.40	4.20	13.50	17.70	4.20
2006	1.70	1.60	1.00	11.50	0.70	2.00	4.30	14.20	18.50	3.70
2007	1.40	1.50	0.90	12.70	0.90	2.20	3.80	15.80	19.60	5.60
2008	1.40	1.50	1.00	13.30	1.20	2.00	3.90	16.50	20.40	4.20
2009	1.50	1.60	0.50	13.80	1.20	1.90	3.60	16.90	20.50	5.30
2010	1.8	1.6	0.6	12.1	1	1.5	4	14.6	18.6	5.45
2011	1.90	1.80	0.30	11.60	0.90	0.80	4.00	13.30	17.30	5.20
2012	3.2	1.70	0.40	12.80	0.80	1.10	5.30	14.70	20.00	5.60
2013	3.6	1.70	0.40	15.50	1.00	2.30	5.70	18.80	24.50	5.55
2014	3.7	D	D	15.00	1.20	2.30	3.70	18.50	22.20	4.80
2015	3.5	NR	NR	17.90	1.30	2.50	3.50	21.70	25.20	5.01
2016	3.3	D	NR	15.80	1.00	2.50	3.30	19.30	22.60	5.90



Source of Data: National Agricultural Statistics Service, USDA